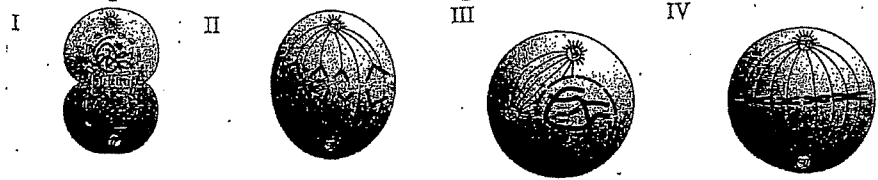


Write the best choice in the space provided.

_____ 1. Which of the following shows the correct order of the stages of mitosis?

- A. I, II, III, IV
- B. II, IV, III, I
- C. III, IV, II, I
- D. IV, II, I, III



_____ 2. What phase of mitosis must be complete before two identical cells are produced?

- A. anaphase
- B. telophase
- C. prophase
- D. interphase

_____ 3. Which of the following best describes metaphase?

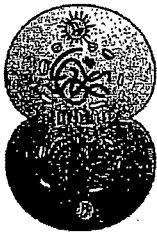
- A. nuclear material is replicated
- B. nuclear membrane begins to dissolve
- C. chromosomes line up at the middle of the cell
- D. chromatids move to opposite sides of the cell

_____ 4. In what stage of mitosis are replicated chromosomes formed?

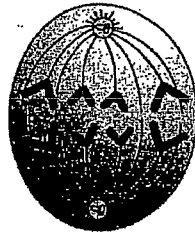
- A. anaphase
- B. telophase
- C. prophase
- D. interphase

Use the following diagram to answer #5-6

Cell 1



Cell 2



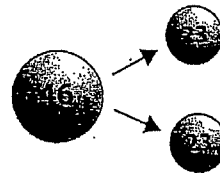
Pick A if the statement is supported by the diagram.
 Pick B if the statement is refuted by the diagram.
 Pick C if the statement is neither supported or refuted by the diagram.

_____ 5. The cells in the diagram are in different stages of mitosis.

_____ 6. Cell 1 is in the earliest stage of the cell cycle.

_____ 7. The diagram shows the production of cells.
 Which of the following is being illustrated?

- A. egg cells
- B. skin cells
- C. muscle cells
- D. plant cells



_____ 8. In which of the following stages do spindle fibers first appear?

- A. anaphase
- B. telophase
- C. prophase
- D. interphase

_____ 9. Recessive traits do not get passed on to the next generation. A. true B. false

_____ 10. Heredity is the study of the passing on of traits. A. true B. false

_____ 11. What do we call the crossing of two individuals, each showing different forms of the same trait?

- A. dominance
- B. codominance
- C. hybridization
- D. incomplete dominance

