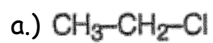
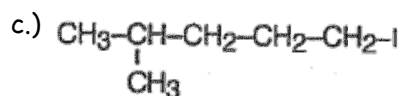
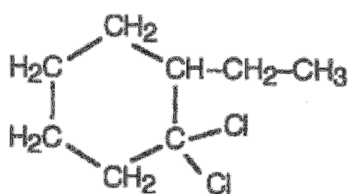


HalidesName - KEY

1.) Name the following molecules.

Chloroethane1,3-dibromopropane4-methyl-1-iodopentane1,1-dichloro-2-fluoroethane

e.)

1,1-dichloro-2-ethylcyclohexane

2.) Draw the following molecules.

(a) trichloromethane (common name = chloroform)

(b) 1,2-dichloroethane

(c) 1,3,5-tribromocyclohexane

(d) 4-bromo-2-chloro-3-ethyloctane

(e) 1,1,1-trifluoro-2-methylpentane

a.)

B.)

c.)

d.)

e.)