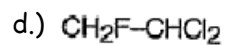
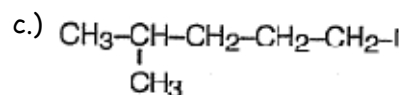
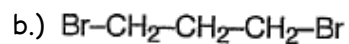
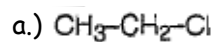


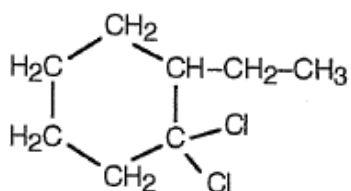
Halides

Name - _____

1.) Name the following molecules.



e.)



2.) Draw the following molecules.

(a) trichloromethane (common name = chloroform)

(d) 4-bromo-2-chloro-3-ethyloctane

(b) 1,2-dichloroethane

(e) 1,1,1-trifluoro-2-methylpentane

(c) 1,3,5-tribromocyclohexane

a.)

B.)

c.)

d.)

e.)