

## Textbook - Graphing Review

**Do:** Applying Concepts → pg. 58 #7 - 10

Problems → pg. 60 #13, 14, 16, 18, 21ab, 24, 25

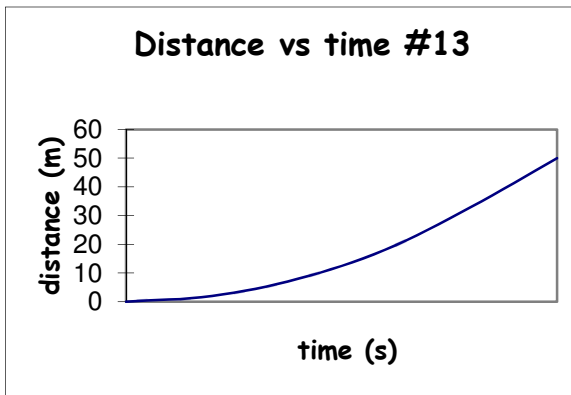
Answers -

7.) a - b increasing forward velocity, b - c constant forward velocity, c - d decreased forward velocity,  
d - e at rest, e - f backward velocity, f - g constant backward velocity (faster than e - f),  
g - h slower constant backward velocity

8a.) Has a head start      8b.) Runner B (steeper slope)      8c.) Runner B passes Runner A

9a.) about 1.5 s and 8.0 s    9b.) Car A    9c.) about 4.0 s (parallel)    9d.) the entire time    9e.) at no time

10a.) constant forward velocity      10b.) distance traveled

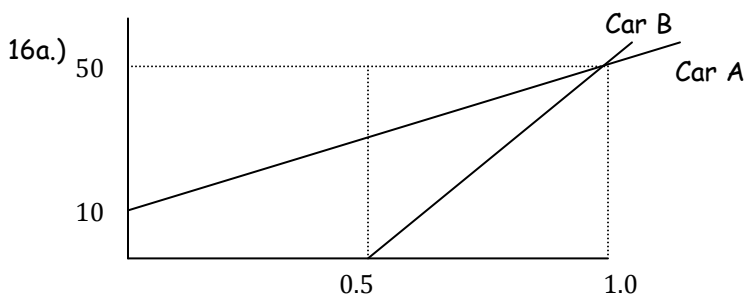


13a.)

13b.) exponential

13c.) 10 m

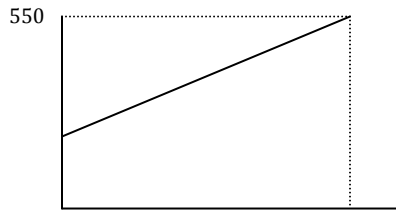
14a.) 400 m    14b.) 0 m    14c.) -200 m



16a.)

16b.) Car B at 1:00 Car A at 1:00

18a.)



18b.) 550 m

18c.) 300

21a.)  $2.3 \frac{m}{s}$

21b.)  $0.67 \frac{m}{s}$

60

24a.) 75 m

24b.) 150 m

24c.) 125 m

24d.) 500 m

25a.)

25b.) 6.0 m

25c.) 24 m

25d.) 102 m

