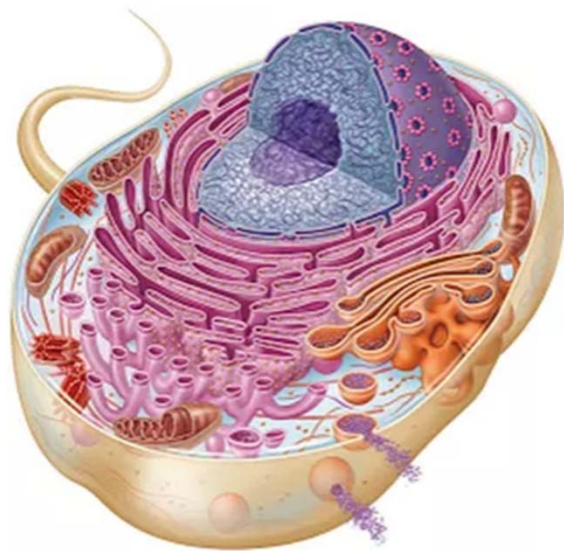
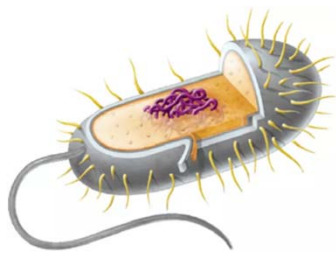


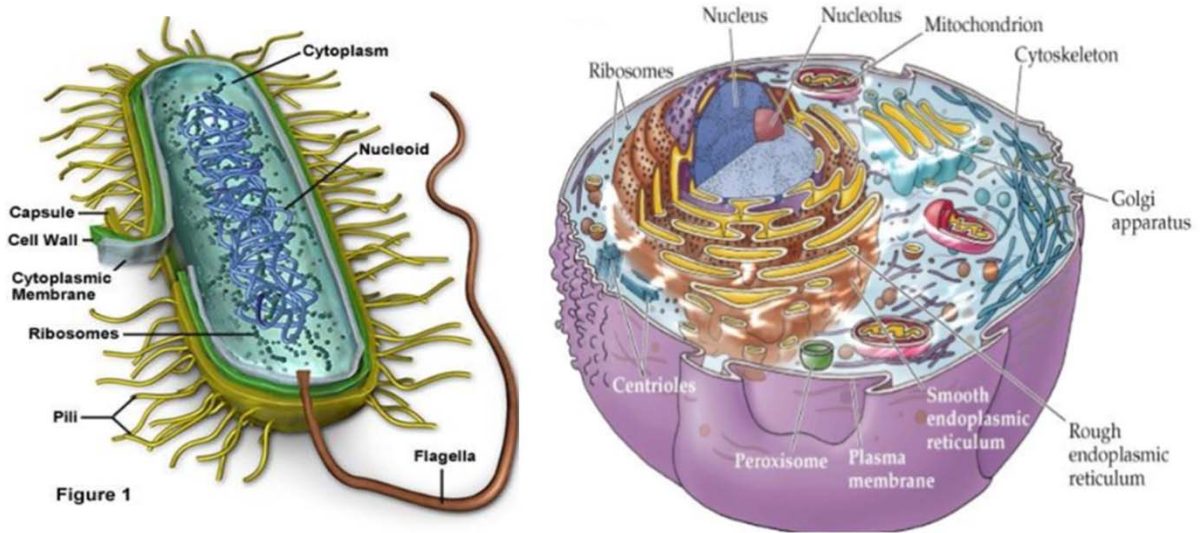
Comparing Cells

Try to resist looking ahead in the slides. You will get more out of it if you follow along.

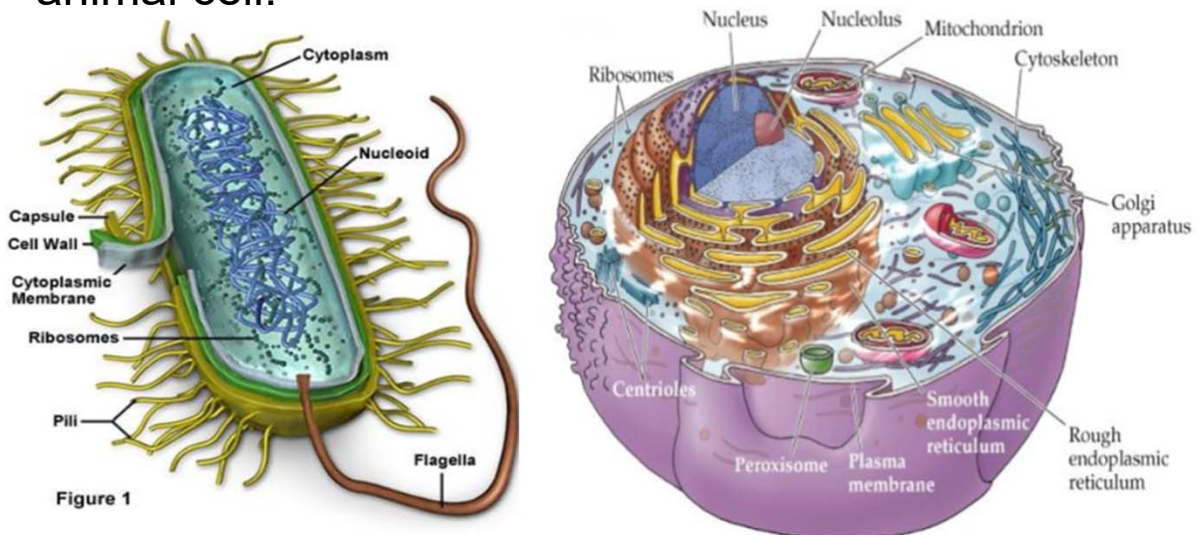
Compare the two diagrams. What is the same?
What is different?

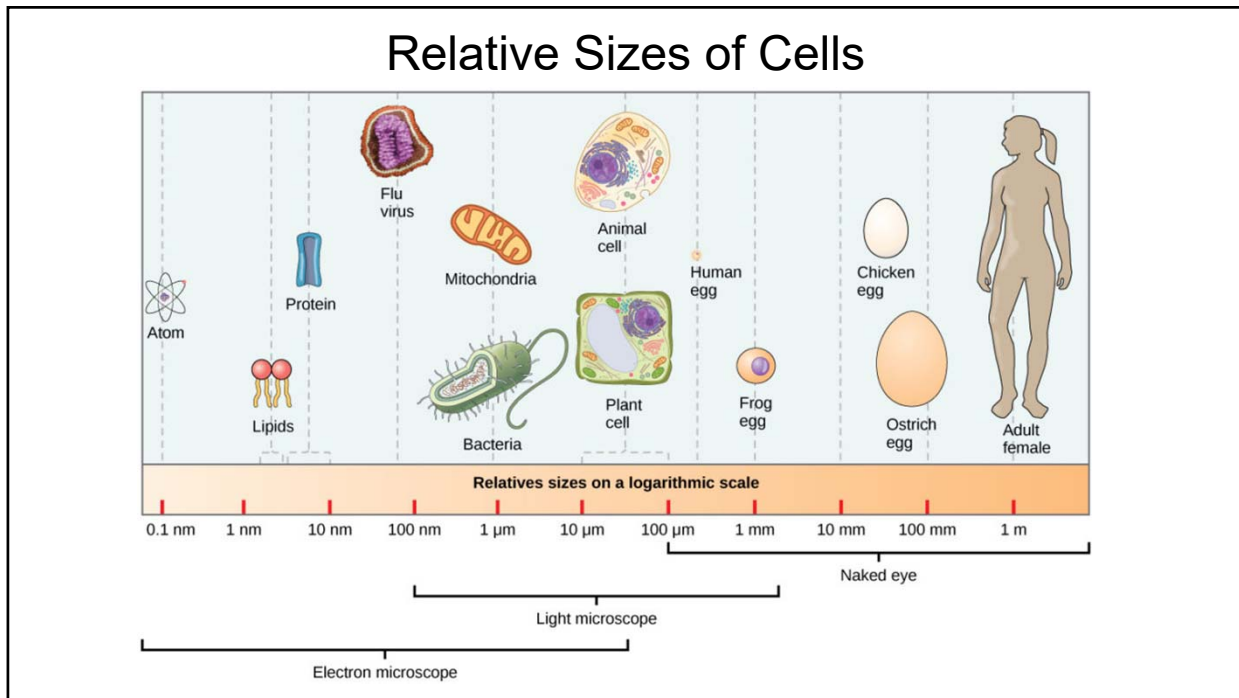


Now, what else do you notice?

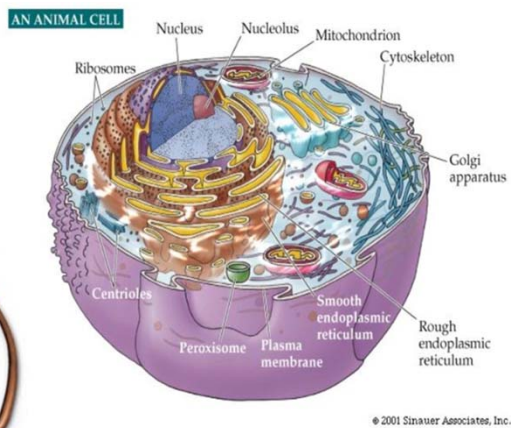
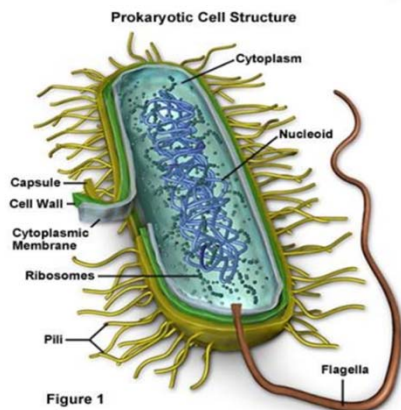


On the left is a bacterial cell, on the right is an animal cell.





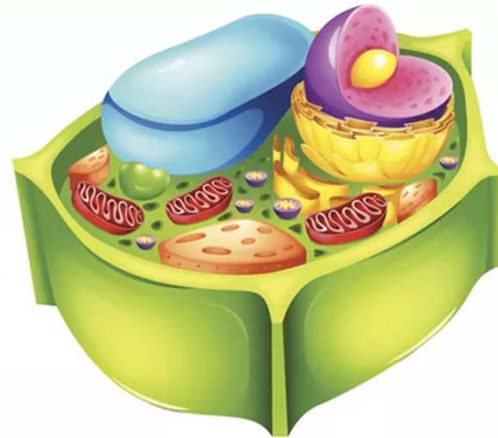
The cell on the left is prokaryotic, the cell on the right is eukaryotic. Which one do you think evolved first? Why?



Plant vs. Animal Cell



animal cell



plant cell

How do the organelles compare?

